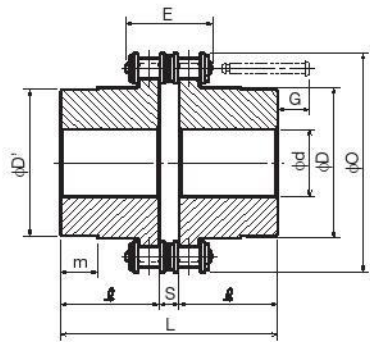




# Chain Couplings



The chain coupling consists of a shaft coupling assembled from 2 rows of roller chain and 2 sprockets which engage them. By freely inserting or removing a joint pin, the chain ends can be simply connected or dismantled.

The original KANA structure is such that the case has been split into two perpendicularly to the shaft, and the cases KC3012 to KC8022 have a V-shaped groove on both sides with an O-ring inserted to prevent oil leaks.

## ◇ Standard Chain Coupling Body

Standard Chain Coupling No.	Chain in Use		Shaft Diameter Range d			Body Dimensions								Approx. Weight kg	¥
	Pitch	Maximum width E	Minimum (prepared hole H10)	Maximum	O	D	D'	m	L	ℓ	S	G			
3012H	9.525	23.9	14 (12)	16	45	27	25	5.5	64.8	30	4.8	6	0.4		
4012H	12.70	32.0	14 (12)	22	61	36	33	10	79.4	36	7.4	11	0.8		
4014H	12.70	32.0	14 (12)	28	69	45	43	9	79.4	36	7.4	11	1.1		
4016H			16 (14.5)	32	77	51	48	15	87.4	40		7	1.4		
5014H	15.875	39.9	16 (14)	35	86	56	53	16	99.7	45	9.7	12	2.2		
5016H			18 (16)	40	96	63	60	16				2.7			
5018H	15.875	39.9	18 (16)	45	106	73	70	16	99.7	45	9.7	12	3.8		
6018H	19.05	52.5	22 (20)	55	128	88	85	18	123.5	56	11.5	19	6.2		
6020H	19.05	52.5	22 (20)	60	140	103	98	16	123.5	56	11.5	19	7.8		
6022H			22 (20)	70	152	115	110	12					10.4		
8018H	25.40	66.2	22 (20)	80	170	115	110	15	141.2	63	15.2	31	12.7		
8020H			22 (20)	85	186	125	121	12	145.2	65		29	16.0		
8022H	25.40	66.2	22 (20)	100	202	143	140	19	157.2	71	15.2	23	20.2		
10020H	31.75	79.0	27 (25)	110	232	162	160	40	178.8	80	18.8	32	33.0		
12018H	38.10	101.2	37 (35)	125	255	173	170	56	202.7	90	22.7	53	47.0		
12022H			37 (35)	140	303	213	210	55	222.7	100		43	72.0		



Guide

\* The large coupling case KC10020 and beyond uses a method where one side is fixed and the other side is a Z-type seal.  
\* Since we also manufacture sizes other than those in the catalog, and machine shaft holes/keys/taps, etc., depending on your request, please contact our sales office for details.



Video Guide

You can see the product on video.



● **Order No. Example**  
**3012H Body**  
**(2 MB sprockets + 1 chain)**  
**3012C Case**

1 Set



Order Method

Coupling No. and Quantity

Dedicated Chain No. Dedicated Case No.

Combinations and Quantity



Postage

Same-day shipping



Guide

MB3012  
 MB3012 ) = 3012H } 1 Set  
 3012L )

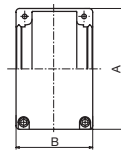
- The body (H) consists of 2 sprockets (MB) and 1 chain (L).
- The body (H) and case (C) make up 1 set.



\* Content of the Body

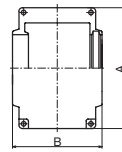
Method 1

KC-3012 to KC-8022 Dedicated Cases  
 (Method with O-ring seals on both sides)



Method 2

KC-10020 to KC-12022 Dedicated Cases  
 (method where one side is fixed and the other is a Z-type oil seal)



**3012L**

Coupling No.

\* You may order just the chain if required.

◇ Dedicated Case

Dedicated Case No.	A	B	Weight (kg)	¥
3012C	69	63	0.3	
4012C	77	72	0.3	
4014C	84	75	0.4	
4016C	92	75	0.4	
5014C	101	85	0.5	
5016C	111	85	0.6	
5018C	122	85	0.8	
6018C	142	106	1.2	
6020C	158	105	1.6	
6022C	168	117	1.8	
8018C	190	129	2.5	
8020C	210	137	2.9	
8022C	226	137	3.6	
10020C	281	153	4.6	
12018C	307	181	6.2	
12022C	357	181	8.0	

◇ Dedicated Chain

Dedicated Chain No.	Weight (kg)	¥
3012L	0.1	
4012L	0.2	
4014L	0.2	
4016L	0.3	
5014L	0.4	
5016L	0.5	
5018L	0.6	
6018L	1.0	
6020L	1.2	
6022L	1.3	
8018L	2.3	
8020L	2.5	
8022L	2.7	
10020L	4.8	
12018L	7.6	
12022L	9.3	

A1 Multi-EP Grease No.2

For the lubricant agent, please use the dedicated KANA standard coupling grease.

MBSG04  
 Internal Capacity 400g



MBSG05  
 Internal Capacity 500g



MBSG25  
 Internal Capacity 2.5kg/16kg



▶▶ See P345

● **Order No. Example**  
**MB 4012**

Type Model No.

Chain Coupling No.

\* An MB sprocket is on one side of the body (only 1 sprocket).

Body Dimensions		Chain Coupling No.		Prepared Holes	Shaft Hole Machining Limits		Weight kg	¥	Semi-F ¥
BL	BD	Type	Model No.		Minimum	Maximum			
29.8	26.5	MB	3012	12	14	16	0.2		
36.0	36.0		4012	12	14	22	0.3		
36.0	45.0		4014	12	14	30	0.5		
40.0	51.0		4016	14.5	16	32	0.6		
45.0	56.0		5014	14	16	35	0.9		
45.0	63.0		5016	16	18	40	1.1		
45.0	73.0		5018	16	18	45	1.6		
56.0	88.0		6018	20	22	55	2.6		
56.0	102.5		6020	20	22	60	3.6		
56.0	115.0		6022	20	22	70	4.6		
63.0	115.0		8018	20	22	80	5.2		
65.0	125.0		8020	20	22	85	7.0		
71.0	143.0		8022	20	22	100	8.8		
80.0	162.0		10020	25	27	110	14.1		
90.0	170.0		12018	35	37	125	19.7		
100.0	210.0		12022	35	37	140	31.4		

\* Please refer to P24 to P33 for the Semi-F Series <Complete Product> order method.

Semi-F Series & FITLINK  
 Roller Chains  
 Chain Accessories  
 Idlers & Tensioners  
 Sprockets  
 Oilless Bushings  
 Transmission Accessories  
 Conveyor Chains/Sprockets  
 Chain Couplings  
 Resin Rails  
 Triple Speed/Center  
 Tipping Bars/Pulleys/Hangers  
 Shaft Collars  
 Pinions/Racks/Miter Gears  
 Imperfect Products

# Chain Coupling Guide



Chain Coupling With Attached Case

Q. Which model do I need if I want to order chain couplings with cases?

A. Models differ by shaft hole/key groove machining, NOT MACHINED <--> MACHINED

<Not Machined>  
Model quantity  
5014H x 1  
5014C x 1

\* If you would like Coupling No. 5014

5014H  
(Body)

5014C  
(case)



<Inner Diameter Machined>

\* Coupling No. 5014 If you would like inner diameter D20 and D30

Model	Quantity
FBN5014D20	x 1
FBN5014D30	x 1
5014C	x 1
5014L	x 1

For the body, 2 x MB sprockets (with no inner diameter machining) and a chain are packed together as a set.  
For the <Not Machined> case, you do not need to order chains individually.

Please select 2 sprockets which have been machined with the shaft holes/keys that you require.

▶▶ See P376 to 377

Please use the Semi-F Series for non-standard products.

▶▶ See P26 to 27

Ordering cases is the same as for <Not Machined>.

As chains must be ordered as single items, please take care.

FBN5014D20  
(inner diameter D20)

FBN5014D30  
(inner diameter D30)

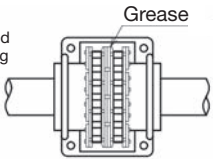
5014L  
(chain only)



◆ For chain couplings, we recommend that you include a case, and apply grease.

- (1) When using at high rotational speed.
  - (2) When using it in a dusty/dirty environment, for example, or in a humid atmosphere.
  - (3) Scattering of the lubricant agent is prevented and also any intrusion of dust/dirt.
  - (4) The outer appearance looks smart while reducing danger.
- Lubrication significantly lengthens the life of the coupling.

For the lubricant agent, please use the dedicated KANA standard coupling grease.

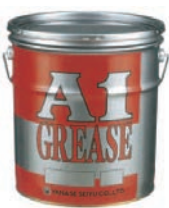


▶▶ See P345

A1 Multi-EP Grease No.2

MBSG04  
Internal Capacity  
400g

MBSG25  
Internal Capacity  
2.5kg/16kg



Chain Coupling No.	Grease Weight kg	Chain Coupling No.	Grease Weight kg
3012	0.05	6022	0.50
4012	0.09	8018	0.80
4014	0.10	8020	1.00
4016	0.12	8022	1.00
5014	0.15	10020	1.70
5016	0.18	12018	3.30
5018	0.25	12022	4.30
6018	0.40	16018	8.30
6020	0.50	16022	10.00