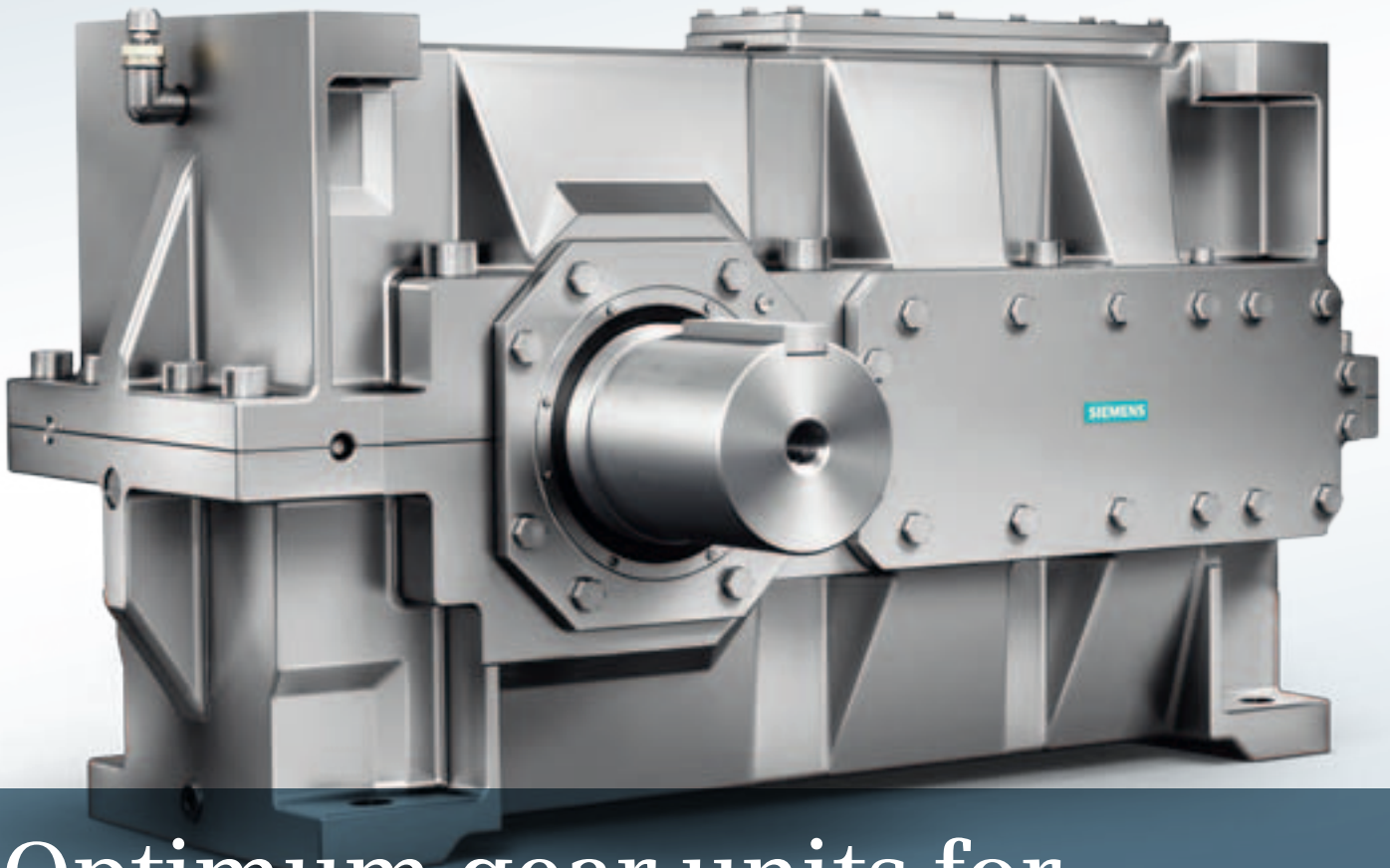


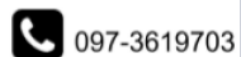
SIEMENS



Optimum gear units for the palm oil industry

FLENDER gear unit solutions make it easy to plan plants – with diversity, quality and availability.

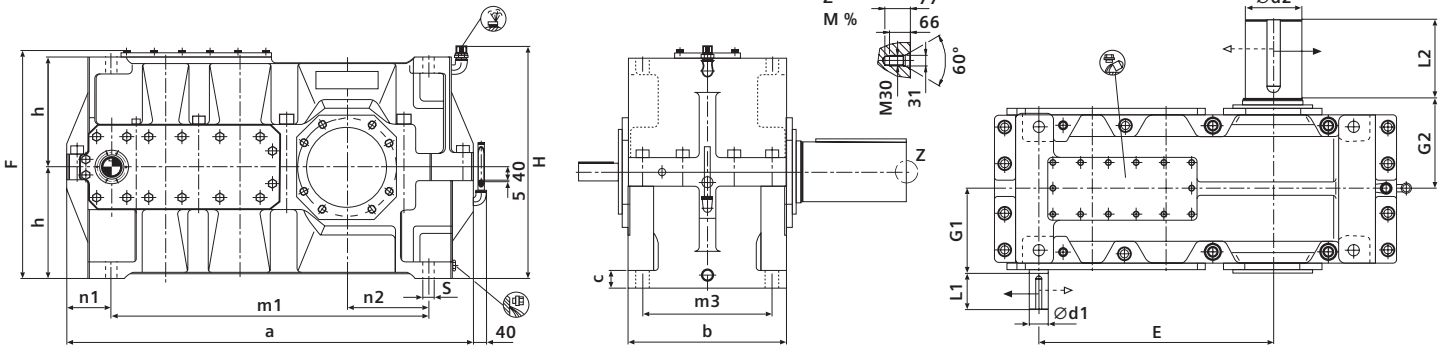
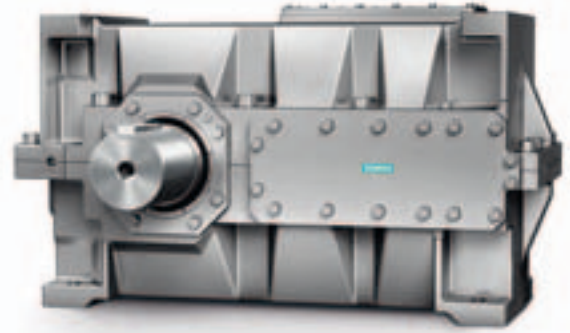
Palm oil drives



[siemens.com/gearunits](https://www.siemens.com/gearunits)

Helical gear units – palm oil series for kernel expeller and screw press applications

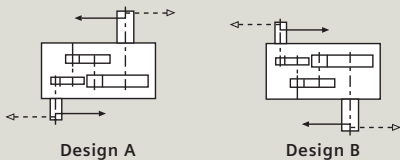
H3SH gear unit



Gear unit	Application	Nominal power rating (kW)		Nominal output torque rating (Nm)	Exact ratio	Speed (rpm)	
		at n1 = 1,000 rpm	at n1 = 750 rpm			n1/n2	n1/n2
H3SH10	P15 Screw press	81	61	43,000	79.046	830/10.5	-----
H3SH11	P20 Screw press	111	83	60,000	80.111	840/10.5	-----

Gear unit	Application	Input shaft dimensions in mm			Output shaft dimensions in mm			
		d1	L1	G1	d2	L2	G2	F
H3SH10	P15 Screw press	45m6	100	230	160n6	300	235	675
H3SH11	P20 Screw press	42m6	110	255	170n6	240	270	695
H3SH11	Kernel expeller	50m6	110	255	170n6	300/240/200	270	695

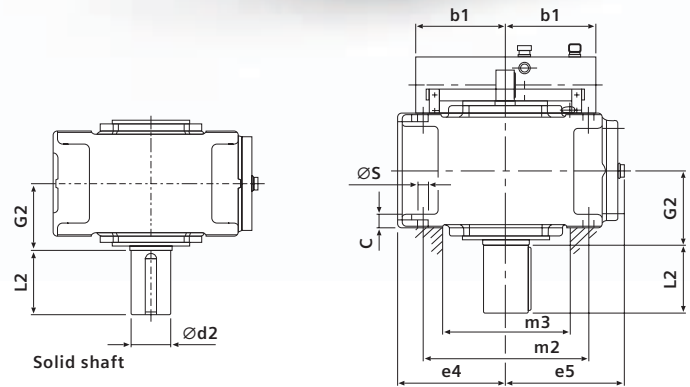
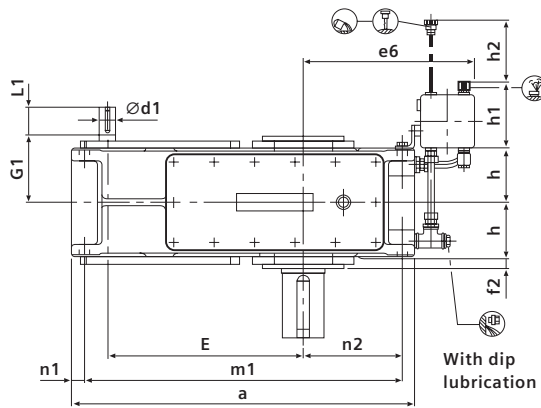
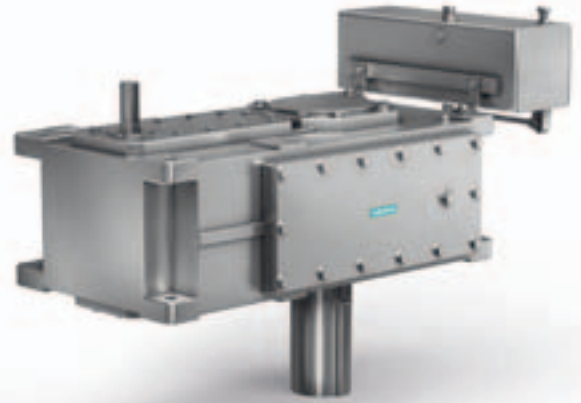
Gear unit	Housing dimensions in mm											Weight (kg)	Quantity of oil (l)
	a	b	c	E	h	H	m1	m3	n1	n2	S		
H3SH10	1,060	380	35	630	325	655	620	330	115	210	28	1,080	45
H3SH11	1,220	450	50	705	335	705	705	370	135	245	35	1,230	68



The information provided in this brochure contains merely general descriptions or characteristics of performance, which in actual case of use do not always apply as described or which may change as a result of further development of the products. An obligation to provide the respective characteristics shall only exist if expressly agreed in the terms of the contract.

Helical gear units – palm oil series for digester drive applications

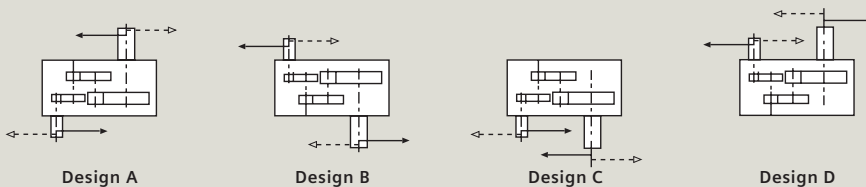
H3SV gear unit



Gear unit	Nominal power rating (kW)	Nominal output torque rating (Nm)	Exact ratio	Speed (rpm)
	at $n_1 = 1,500\text{rpm}$			n_1/n_2
H3SV6	36	14,500	60.347	1,500/24.8
H3SV7	52	20,500	62.867	1,500/24
H3SV8	64	25,500	63.413	1,500/23.7
H3SV9	85	34,000	63.049	1,500/23.8
H3SV10	108	43,000	62.537	1,500/24
H3SV11	151	60,000	63.778	1,500/23.5

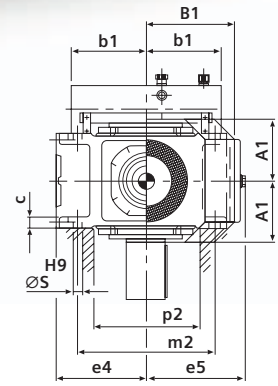
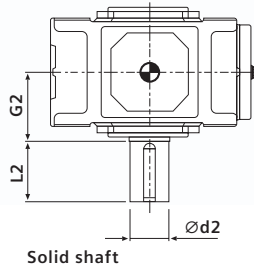
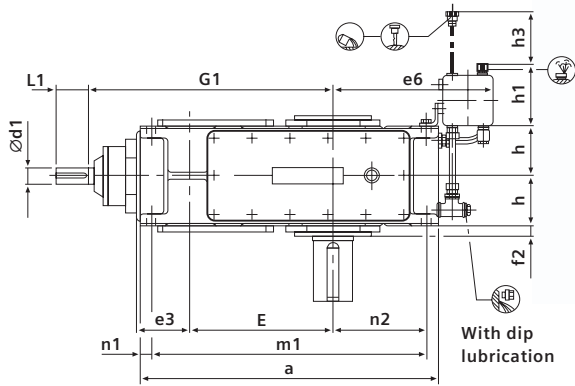
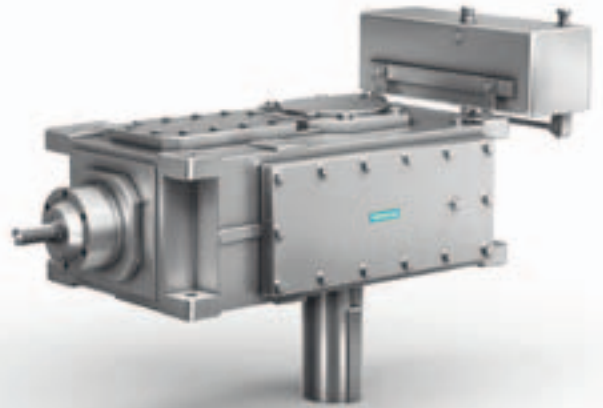
Gear unit	Input shaft dimensions in mm			Output shaft dimensions in mm		
	d1	L1	G1	d2	L2	G2
H3SV6	30m6	50	160	110n6	210	165
H3SV7	35m6	60	185	120n6	210	195
H3SV8	35m6	60	185	130n6	250	195
H3SV9	45m6	100	230	140n6	250	235
H3SV10	45m6	100	230	160n6	300	235
H3SV11	50m6	80	255	170n6	300	270

Gear unit	Housing dimensions in mm							Housing dimensions in mm							Weight (kg)	Quantity of oil (l)			
	a	b1	c	e4	e5	e6	E	f2	h	h1	h2	m1	m2	m3			n1	n2	S
H3SV6	770	240	30+/-1	230	252	425	440	28	127.5	205	240	710	360	270	30	220	24	365	37
H3SV7	845	240	36+/-1	280	292	425	495	30	150	205	250	775	430	330	35	215	28	540	60
H3SV8	950	240	36+/-1	280	312	485	540	32	150	205	250	880	430	330	35	275	28	625	72
H3SV9	1,000	330	45+/-1	320	342	560	580	32	185	275	330	920	490	370	40	260	36	875	100
H3SV10	1,100	330	45+/-1	320	342	610	630	32	185	275	330	1,020	490	370	40	310	36	1,020	110
H3SV11	1,200	330	54+/-1	380	402	595	705	35	215	275	340	1,100	600	440	50	295	40	1,400	170



Bevel-helical gear units – palm oil series for digester drive applications

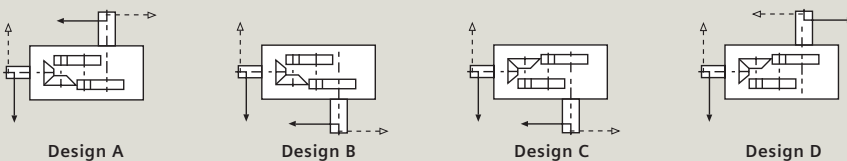
B3SV gear unit



Gear unit	Nominal power rating (kW)	Nominal output torque rating (Nm)	Exact ratio	Speed (rpm)
	at $n1 = 1,500\text{rpm}$			$n1/n2$
B3SV6	36	14,500	60.904	1,500/24.6
B3SV7	50	20,500	61.438	1,500/24.4
B3SV8	64	25,500	62.499	1,500/24
B3SV9	85	34,000	62.396	1,500/24
B3SV10	108	43,000	63.114	1,500/23.8
B3SV11	151	60,000	60.808	1,500/24.7

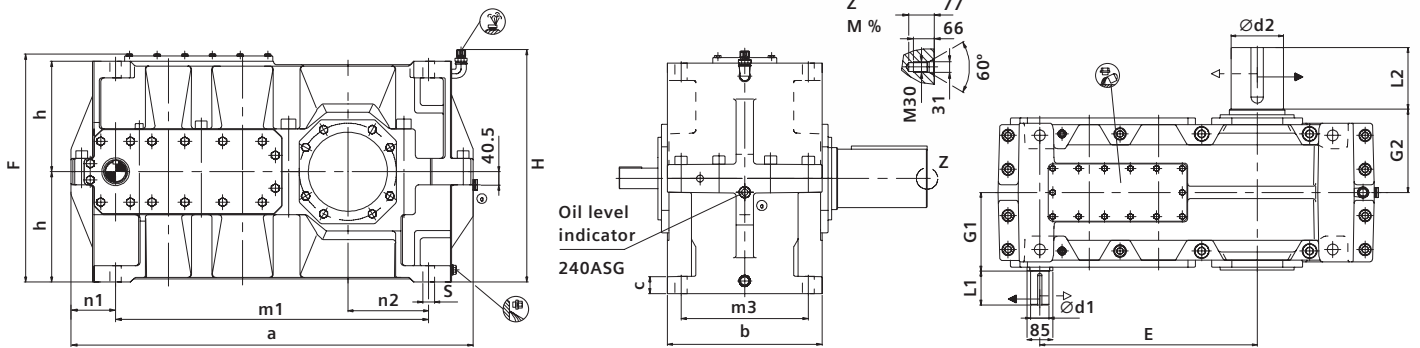
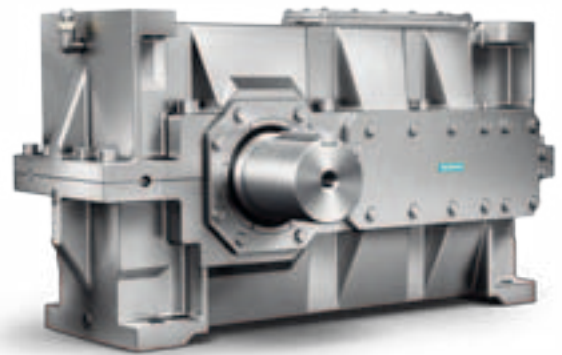
Gear unit	Input shaft dimensions in mm			Output shaft dimensions in mm			Fan
	d1	L1	G1	d2	L2	G2	A1
B3SV6	28m6	60	610	110n6	210	165	168
B3SV7	35m6	80	690	120n6	210	195	193
B3SV8	35m6	80	735	130n6	250	195	193
B3SV9	40m6	100	800	140n6	250	235	231
B3SV10	40m6	100	850	160n6	300	235	231
B3SV11	50m6	110	960	170n6	300	270	263

Gear unit	Housing dimensions in mm							Housing dimensions in mm										Weight (kg)	Quantity of oil (l)
	a	b1	c	e4	e5	e6	E	f2	h	h1	h2	m1	m2	m3	n1	n2	S		
B3SV6	720	240	30+/-1	230	252	425	350	28	127.5	205	240	660	360	270	30	220	24	380	35
B3SV7	785	240	36+/-1	280	292	425	385	30	150	205	250	715	430	330	35	215	28	550	52
B3SV8	890	240	36+/-1	280	302	485	430	32	150	205	250	820	430	330	35	275	28	635	67
B3SV9	925	330	45+/-1	320	342	560	450	32	185	275	330	845	490	370	40	260	36	890	115
B3SV10	1,025	330	45+/-1	320	342	610	500	32	185	275	330	945	490	370	40	310	36	1,020	125
B3SV11	1,105	330	54+/-1	380	402	595	545	35	215	275	340	1,005	600	440	50	295	40	1,455	180



Helical gear units – palm oil series for kernel expeller and screw press applications

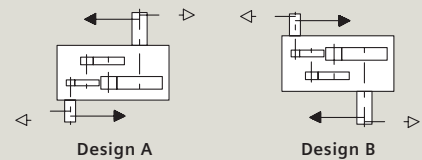
H3PK11 gear unit

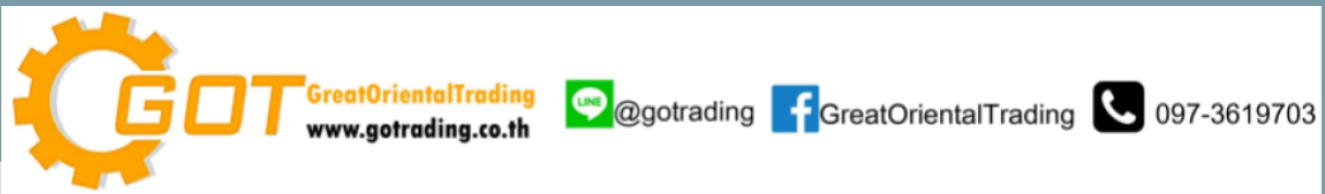


Gear unit	Application	Nominal power rating (kW)		Nominal output torque rating (Nm)	Exact ratio	Speed (rpm)	
		at n1 = 1,000 rpm	at n1 = 750 rpm			n1/n2	n1/n2
H3PK11	Kernel expeller	74	55	74,000	56.92	1,000/17.57	750/13.18

Gear unit	Application	Input shaft dimensions in mm			Output shaft dimensions in mm			
		d1	L1	G1	d2	L2	G2	F
H3PK11	Kernel expeller	60m6	110	255	170n6	300/240/200	270	695

Gear unit	Housing dimensions in mm											Weight (kg)	Quantity of oil (l)
	a	b	c	E	h	H	m1	m3	n1	n2	S		
H3PK11	1,220	450	50	705	335	705	705	370	135	245	35	1,230	68





Further information on drive technologies:
www.siemens.com/drives

Siemens AG
Industry Sector
Mechanical Drives
Alfred-Flender-Straße 77
46395 BOCHOLT
GERMANY

Subject to change without prior notice 0911
Order No.: E20001-A270-P900-X-7600
DISPO 27904
GD.MD.AP.XXXX.52.1.06 WS 09111.0
Printed in Germany
© Siemens AG 2011

The information provided in this brochure contains merely general descriptions or characteristics of performance which in actual case of use do not always apply as described or which may change as a result of further development of the products. An obligation to provide the respective characteristics shall only exist if expressly agreed in the terms of the contract.

All product designations may be trademarks or product names of Siemens AG or supplier companies whose use by third parties for their own purposes could violate the rights of the owners.